

THE
Janice



2,930 SQ. FT

Inviting warmth and unspoiled charm

**K
C
H**

Enter from the welcoming foyer with its custom oak staircase, into The Janice's 2-story great room – a gracious atmosphere with hardwood floors, a raised-hearth stone fireplace, and palatial arches and columns. Opposite is an inviting sunroom with view-filled windows. The chef's kitchen showcases furniture grade cabinetry, granite counters, Kitchen-Aid stainless steel appliances and spacious breakfast area. In the private master suite, enjoy walk-in closets an en-suite master bath with luxurious Roman shower. Three additional bedrooms complete this elegant home.

Unprecedented attention to detail is evident among the many distinctive appointments throughout all of Klomp Custom Homes.

Klomp Custom Homes has lots available in several developments but we will also build on a site provided by the homeowner

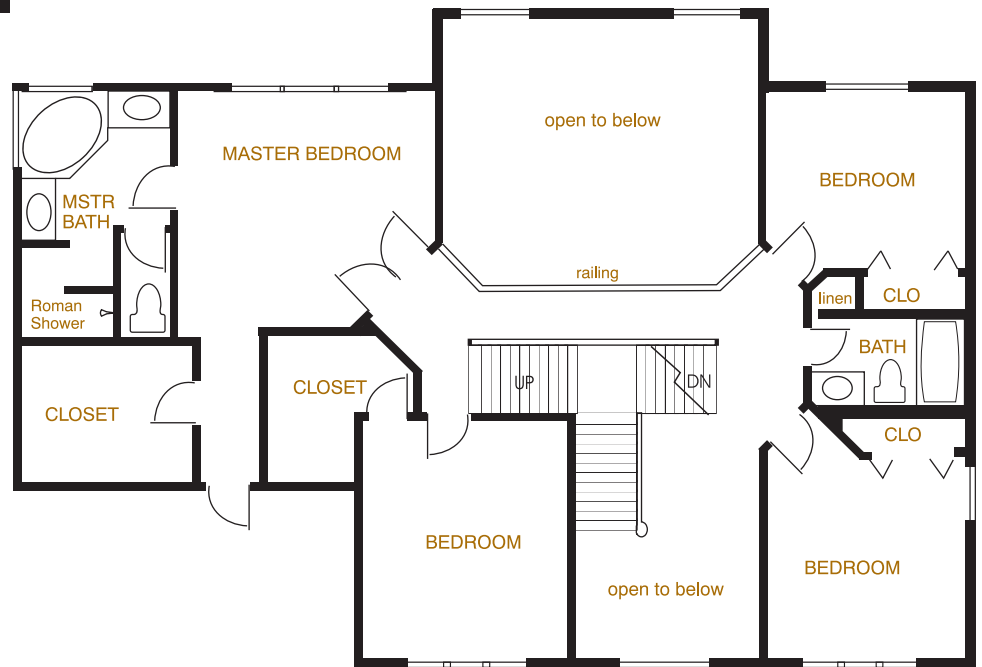


Standards
 in our homes are
 considered
 "upgrades"
 to others

Main Level

The Janice offers these
 Luxuries:

- ❑ Granite and hardwood
- ❑ Custom cabinets
- ❑ Custom oak staircase
- ❑ 2-story great room
- ❑ Columned arches
- ❑ Open concept
- ❑ KitchenAid Stainless steel appliances
- ❑ 2x6 exterior walls
- ❑ Stone Entry
- ❑ 2-bay drywalled, insulated & painted garage



Upper Level

THE
Janice



Call for information contact:
 Crystal : 219.308.8369
 Todd : 219.308.8372
www.klompcustomhomes.com